

Where Quality and Professionalism
 are an every day standard!

Chapters are not authorized to speak for the Society

Volume 53, Issue 1



WHAT'S IN THIS ISSUE

President's Report	2
Boston Product Show Info	3
AYP Information	4
Legislative Report	5
Technical Report	5
Index of Advertisers	5
Membership Report	6 & 7
Product Show Details	8 - 10
Membership App & Info	11 & 12
Advertising Info	13

Society email aspe@aspe.org
Society Website www.aspe.org

Boston Chapter Website
www.aspebostonchapter.org



President's Report

We are two months into our 2025–2026 ASPE season, and our calendar is packed with exciting social and networking events, educational opportunities for all ASPE members and nonmembers alike, and our signature Bi-Annual Product Show.

We're just two weeks away from the Bi-Annual ASPE Boston Product Show and Technical Sessions on Tuesday, October 21st, at the Royal Trade Plaza in Marlborough, MA. Please note that the technical sessions at the Product Show will serve as our official October monthly meeting this year. CEU credits will be provided for each technical session you attend, so don't miss this chance for professional development.

Full registration details for the Product Show and Technical Sessions can be found in this newsletter, on the ASPE website, and on our ASPE LinkedIn page. If you have any questions or require assistance, please contact us through our official ASPE email address.

In addition, the WOA (Women of ASPE) Social Event is being planned for this month. To stay updated, please refer to the dedicated information on the date and time for this event in this article and on the ASPE website. **You can also contact Adrienne Harris at adrienne@petersenengineering.com.**

Our membership continues to grow every day, which is wonderful to see. However, some members are close to missing their renewal deadline. Please don't let that be you! The membership section of this newsletter is your go-to resource for staying up to date on who is nearing their renewal deadline and whose membership may have lapsed. Please take a moment to review and renew as needed.

We look forward to another vibrant month and to seeing you all at our upcoming events!

With gratitude and excitement,
Luther Thevenin
President, ASPE Boston Chapter

President
Luther Thevenin, CPD, MCPPO
Cannon Design
Tel: (774) 426 - 0996
email: luthev@gmail.com

V. P. Technical
Edward Nadeau
AHA Consulting Engineers, Inc.
Tel: (617) 694 - 5382
email: edward_nadeau@aha-engineers.com

V. P. Legislative
Ethan Grossman, PE, CPD
IPS - Integrated Project Services, LLC
Tel: (781) 281 - 6873
email: ethan.m.grossman@gmail.com

V. P. Membership
John Callahan, CPD, GPD
J. H. Pokorny Associates
Tel: (508) 223 - 9369
email: johnc@jhpokorny.net

Treasurer
Peter Gooding
David Gooding, Inc.
Tel: (781) 603 - 7664
email: pgooding@goodingd.com

Administrative Secretary
Greg McCarthy
The Walter F. Morris Company
Tel: (508) 989 - 9024
email: gmcCarthy@morrismerchants.com

Corresponding Secretary
Jason Allison
Viega LLC
Tel: (508) 564 - 3943
email: jason.allison@viega.us

Affiliate Liaison
Patrick J. Haney
W. P. Haney Company
Tel: (508) 326 - 7056
email: phaney@wpahaney.com

ASPENEWS Editor
Dawn Pokorny
Tel: (508) - 520 - 0133
email: dawnp@jhpokorny.net

WOA Liaison
Adrienne Harris

AYP Liaison
Dan Kelly

Board of Governors

Chairman
Chris Curran

Members
Edward Nadeau
Laurence D. Johnston, CPD

DOMESTIC WATER BOOSTER PUMP SYSTEMS

QR Code:

Dennis Whitelaw, President
TOWLE-WHITNEY.COM | 800-807-9827
A Veteran-Owned Company

Liberty Pumps, GE Appliances, Apollo Valves, AIMR, COOPER NEW ENGLAND SALES, INC., Speakman, Delany Products, Oasis, Heat Link, KROWNE

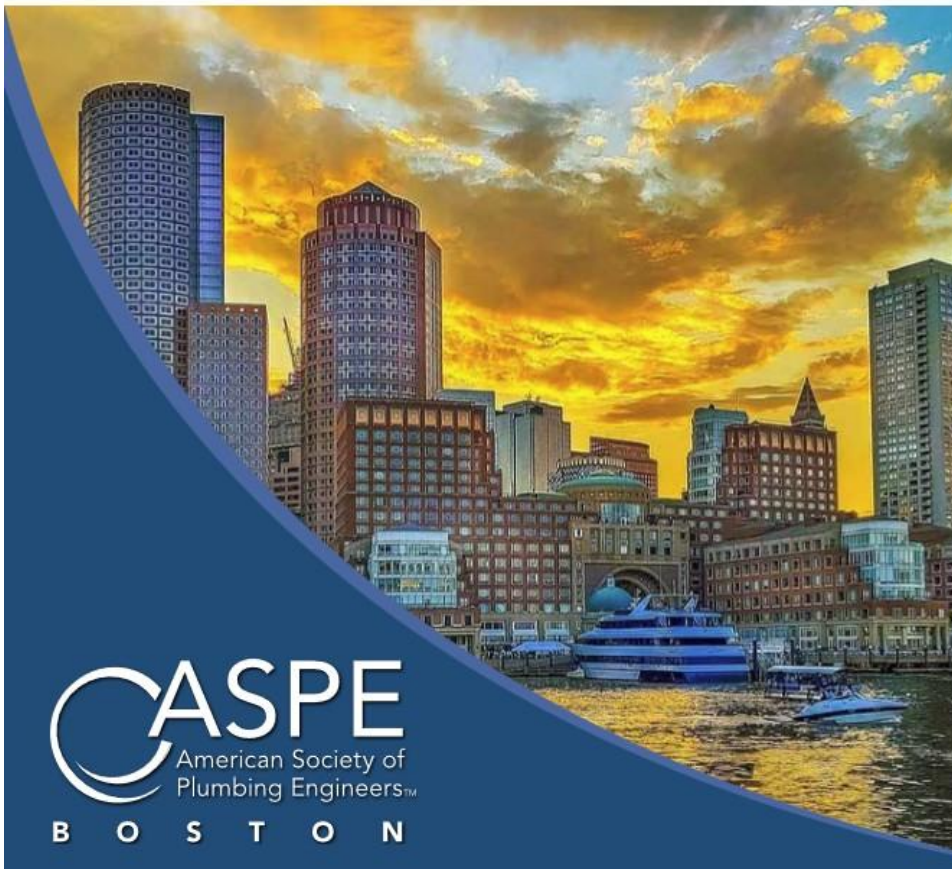
Visit us online: COOPERNEWENGLANDSALES.COM
Call (508) 720-7151
info@co-nes.com

SAVE THE DATE!

BOSTON PRODUCT SHOW

OCTOBER 21, 2025

Royal Plaza Trade Center
181 Boston Post Road West
Marlborough, MA 01752



ASPE
American Society of
Plumbing Engineers™
B O S T O N

ASPE's Boston Chapter is excited to bring together industry professionals and manufacturers for a day of networking, learning, and showcasing our field's latest products and innovations.

Exhibit and Attend

We encourage manufacturers to exhibit at the show and area professionals to attend. This is a fantastic opportunity to connect with peers, discover new products, and gain valuable insights.

Supporting Our Community

Proceeds from the event support various activities, including:

- * Providing scholarships to young engineers and designers
- * Funding community outreach on behalf of the ASPE Boston Chapter
- * Hosting anniversary parties and monthly dinner meetings
- * Securing quality speakers for Chapter meetings and presenting them with tokens of our appreciation

Your Feedback Matters!

We value your input and would appreciate your feedback on seminar sessions. Please [click here](#) to provide your suggestions and help us tailor the event to your needs.

For More Information

Visit aspebostonchapter.org.



Boston



Boston ASPE AYP – October 2025 Newsletter Hello Boston ASPE AYP Members and Friends!

Fall is here and the Boston Chapter of ASPE AYP extends a warm welcome to all our members, colleagues, and industry partners. October is shaping up to be an exciting month filled with opportunities to connect and learn!

A Big Thank You to Everyone Who Joined Us at the ASPE Golf Tournament!

A huge thank you to everyone who joined us for the ASPE Boston Chapter Golf Tournament August 21st! We had a fantastic turnout and a day filled with great weather, camaraderie, and friendly competition.

Your participation not only made the event enjoyable, but also helped support our scholarship fund and chapter initiatives. We are especially grateful to our sponsors, volunteers, and planning committee, whose efforts made the tournament a success.

Events like this remind us of the strength of our community and the value of coming together outside the technical setting. We look forward to building on this energy at our upcoming

Product Show on October 21!

Not a Member Yet? Join Us This Month!

If you haven't joined Boston ASPE AYP yet, October is a great time to get involved! Membership gives you access to exclusive networking events, ongoing professional development, and a supportive community of peers who are just as passionate about the industry as you are.

By becoming a member, you'll stay connected to industry trends, build meaningful relationships, and gain access to mentorship opportunities that can elevate your career. Don't wait—become a part of the Boston ASPE AYP community today!

What's Coming Up Next?

We're already planning our next exciting AYP event for the last quarter of 2025! We also hope to see many AYP members on October 21st for the 2025 ASPE Product Show at the Royal Plaza Trade Center in Marlborough MA. Keep an eye on your email inbox and our social media channels for updates and registration details. We can't wait to bring you another opportunity to connect, learn, and grow with your fellow professionals.

Dan Kelley

dkelley@emersonswan.com

508-505-0363



Index of Paid Advertisers

Cooper NE	2
H2O Degree	5
Towle Whitney	2



Legislative Report

For anyone looking to advance their career, certifications are a good way to obtain goals and continue on a path of lifetime learning. I wanted to focus this month's article on the laws regarding the practice of professional engineering in Massachusetts.

While most management of records and testing is conducted through NCEES (National Council of Examiners for Engineering and Surveying) each State also has its own requirements. The laws in Massachusetts can be found in Massachusetts Gen. Laws c. 112, § 81K through M.

Additional laws can be found in Code of Massachusetts Regulation 250 CMR 5.00 Professional Practice. This regulation covers topics such as Scope of Practice, Competency, and Professional Conduct.

I encourage everyone to keep advancing their technical knowledge and experience. For many of us, that is what gives us the most satisfaction – applying our knowledge and experience “In order to protect the health, property, and welfare of the public and to establish and maintain a high standard of integrity and practice in the professions of engineering” (250 CMR § 5.02).

This is a relevant topic since, it is my understanding, that NCEES is planning on adding a Plumbing Engineering discipline under the umbrella of Mechanical Engineering. Whether you are looking to advance yourself through ASPE with the CPD or the other programs available, LEED or even Construction management it's important to understand the scope of each and how it is recognized.

I look forward to hearing about your progress throughout your career.

Respectfully Submitted, Ethan Grossman, P.E.,
VP Legislative, Boston Chapter ASPE

Point-Of-Use Water Submetering: Proven to Cut Waste & Boost NOI

Download this Free Whitepaper

- Slash Utility Waste
- Retrofit Effortlessly
- Maximize NOI

Read Now



Wireless Utility Management Systems
H2ODegree.com • info@H2ODegree.com

Technical Report



This month we will be having our Biennial Product Show & Education Seminars on October 21, 2025 located at the Marlborough Trade Center & Best Western Hotel, 181 Royal Plaza Drive, Marlborough MA.

Please pass the word around, members of ASPE and non- members are welcome to attend.

Come and join us at the product show and take advantage of the technical sessions.

Tour the product show floor and see various plumbing products that we specify every day, and while you're at it have a few drinks and apps.

I really hope to see everyone there!

There will be a total of (9) 1-hour seminars and (2) 2-hour seminars to choose from. The seminar sessions will begin promptly at 11:00 am, and the last session will end at 4:00 pm, just before the Product Show floor opens.

For a list of Educational Seminars refer to our updated website >>>
[https://aspebostonchapter.org/ASPE Boston 2025 Product Show Technical Sessions](https://aspebostonchapter.org/ASPE_Boston_2025_Product_Show_Technical_Sessions)

Best regards, Ed Nadeau, VP Technical, ASPE Boston Chapter



Membership Report

New Boston Chapter ASPE Members

The Boston Chapter ASPE is pleased to welcome our 17 newest members:

Lawrence Kelley	Full Member	Armstrong	Boston, MA
Paul Covino Jr	Associate Member	JC Cannistraro	Boston, MA
Hari Patel	Full Member	McWane Ind	Scranton, PA
Steve St. Hilaire P.E.	Full Member	Alliance Group	Essex Junction, VT
Christopher Hoekstra	Full Member	C.A. Crowley	Taunton, MA
Zihao Wang	Affiliate Member	Pure Process Tech	Nashua, NH
Scott Cooper	Affiliate Member	Cooper NE Sales	Bethany, CT
Campbell Fowler	Associate Member	BR+A Engineers	Boston, MA
Chad Believeau	Full Member	Fitzmeyer & Tocci	Woburn, MA
Vincent Coolberth	Full Member	JB&B	Boston, MA
Valentino Tartamella	Full Member	JB&B	Boston, MA
Doug Palmquist	Full Member	BR+A Engineers	Boston, MA
Peter Palladino	Affiliate Member	Highland Tank	Tuftonboro, NH
Josh Moniri	Affiliate Member	CED Corporation	Boston, MA
Kurt Warren	Full Member	Liro Group	Boston, MA
Jonathan Tolen	Associate Member	O'Brien	Newton, MA
Sean Flanigan	Associate Member	CLS Consulting	Boston, MA

Are You a New Member? Your first monthly meeting is FREE

Please note that for all new (first time) members, the first chapter meeting you attend this upcoming year will be no charge, courtesy of the Boston Chapter ASPE. Just register online for the meeting that you will be attending and click the “pay at the door” option. The meeting will be no charge for you. Just a small token of appreciation for joining and our way of saying “Welcome to the Boston Chapter ASPE”.

Update your ASPE Contact Information and WIN a \$50 Gift Card!

Nobody in the Chapter logged onto the www.aspe.org website to update their contact information this past month, or if they did, they didn't let me know. So for that reason, we will not be giving out a \$50m gift card this month. See, if just one of you had updated your contact information in the past month, you would have automatically won a \$50 gift card. Maybe you'll do it this month. We'll see...

Everyone has a chance again this month. It only takes six easy steps:

- Go to www.aspe.org.
- Log in with your primary email address and your password. Your initial password is your ASPE membership number. (Once you log in successfully it is recommended to change your password)
- Click on the “My Account” link up top
- Click on the “My Profile” link to the left to see your current contact information
- Click “Edit” and update your information and then click “Save”.
- Email me at johnc@jhpokorny.net and let me know you updated your contact information.

September's “What is it?” Contest Photo Winner

Congratulations to **Mike Gillis** from **P.J. Dionne** whose name was selected at random to win a \$50 Visa gift card. Mike was one of many members that took a few minutes to look at the attached photo and emailed me identifying any number of issues with the piping of this digital mixing valve. Mike actually took the time to mark up the photo and called out all the piping deficiencies. It was an impressive response. Thank you for that effort, Mike.

Though it is difficult to see in the photo, there is a lot wrong with this piping installation. First and foremost is the fact that the mixing valve is installed almost ten feet off the floor. Due to the proximity of the mixing valve to the housekeeping pad of the boilers, it makes setting up a ladder to service the valve problematic. But that's not all...

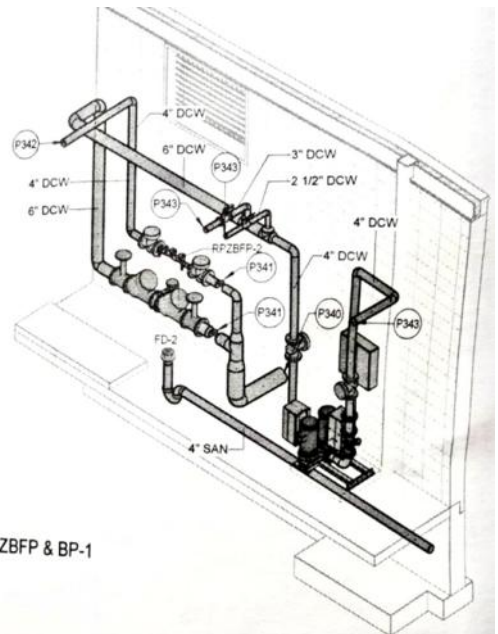
Additionally, for some unexplained reason, the mixing valve was installed with the hot supply on the right and the cold supply on the left. Having the valve installed facing the wall doesn't negatively affect the operation of the mixing valve but it makes it a bit more confusing when you first look at the piping arrangement. The HWR piping on the discharge side of the recirculation pump is incorrectly piped into the cold-water supply of the mixing valve as well. There are also a number of check valves missing that should have been installed in order for the HWR to be piped back to the cold-water makeup of the heat source. Thanks to everyone that responded.



(Membership Report Continued on page 8)

October's "What is it?" Contest Photo

This month I have giving you an easy one to answer. Take a look at this 3D piping detail and tell me what is wrong. It's that simple. Email me your answer at johnc@jhpokorny.net. If your answer is correct, your name will be entered in a random drawing for a \$50 gift card. What could be easier? Do it now before you forget. Thanks



3D VIEW-RPZBFP & BP-1
SCALE

Members with an October Birthday

Wishing the following members a very Happy Birthday this month.

- | | |
|---------------------------|------------------------------|
| Charles B Shaw | Peter Stearns |
| Kacey Russo | Joseph Cinco CPD |
| Ken Reid | Deanna Champagne CPD |
| Greg Campbell CPD | Vincent A. Disteso |
| David R. Vashon P.E., CPD | Philip E. Neveu P.E. |
| David P. Gooding | Brian Broker |
| Timothy Mahoney G.E., CPD | Jonathan Tolen |
| Christopher M. Garcia | Peter Sampson |
| Gage Littlefield | James Conoby G.E. |
| Xin Ma | James N. Polando P.E., FASPE |

Members Due to Renew in October

Just a friendly reminder that the following members need to renew their annual membership before October 31st. If you have already renewed, thank you.

- | | | | |
|--------------------------|----------------------|--------------------------|----------------------------|
| Jason Allison CPD | Ryan Lacey P.E. | Ken Reid | Eric Cummings P.E. |
| Corey Auerbeck | Eric Laforge | Kevin N. Ross | John A. Davis CPD-Emeritus |
| Bess Brunton | Jennifer McHale P.E. | Richard Eiden P.E. | Zachary DiSlavo |
| Stephen Coduri P.E. | Liam Mone | Edward H. Springer P.E. | George Dubin P.E. |
| Janna Cohen | Ethan Moore | Frank Stramaglia CPD | Ethan Grossman P.E. |
| Timothy A. Elliott P.E. | Jason Moura | Cole Tessar | William M Jimenez CPD |
| Jeremy Ferriter CPD, GPD | Lauren Mungovan | Robert Ward LEED AP BD+C | John Mattera |
| Michael J. Gillis | Joseph John Myers | David L. Bazer | Joseph M. Myers |
| J. Jeffrey Gooding | John O'Brien | Sumeet Chani P.E. | Anthony J. Petrillo |

Members Past Due to Renew

As of 10/6/25 when I received the latest Boston Chapter ASPE Roster, the following members had not renewed their annual memberships before it expired. Please renew your membership as soon as possible before your name is dropped from our chapter roster and you become a non-member and have to rejoin. Nobody wants you to have to fill out another membership application. Please contact Racquel at ASPE's Society office and renew right over the phone in 5 minutes. It's that easy. Here is Racquel's contact information:

*Racquel Rodriguez Guerrero
Manager of Membership
6400 Shafer Court Suite 350
Rosemont, IL 60018
rrodriguez@aspe.org
847-296-0002 Ext. 223*

- | | | | |
|-------------------------|------------------------|---------------------|-----------------------------|
| Chad Oscr Hill GPD, CPD | Kevin N. Doty | Antoine Saint-Surin | Brandon R. French |
| Terris Reddick | Joshua Goudreault CPDT | Maddie J Clemmons | Darrin Healey |
| Donald F. Rosen | Brett Hanson | Eric Corum | Taylor Knapp |
| Charles B Shaw | Thomas Lynch | Conor Driscoll | Kevin Pelton CPD-Emeritus |
| Phillip Twombly P.E. | Kacey Russo | Billy Forcier | Thomas Reilly P.E., LEED AP |

Past-Due Members Slated to be dropped this month

The following member's have an expired membership and are going to be dropped from the Chapter Roster at the end of the month. Please renew your membership ASAP so we don't lose you. Contact Racquel Rodriguez Guerrero to renew your membership over the phone. After you have renewed, log on to www.aspe.org and update your contact information so you don't miss your renewal notices again next year. Once you've done that, send me an email so you are eligible to win the \$50 Visa gift card drawing. You've got great odds of winning.

*Racquel Rodriguez Guerrero
Manager of Membership
6400 Shafer Court Suite 350
Rosemont, IL 60018
rrodriguez@aspe.org
847-296-0002 Ext. 223*

- | | | | |
|----------------------|----------------|---------------------------|--------------------|
| Gilbert Castera P.E. | Randy A Gilman | Ryan LaFalam PE | Peter Wingate P.E. |
| Cameron Connor | Timothy Heno | Jeffrey Law LEED AP, P.E. | |
| Michael Coulanges | Joshua Horan | Denis McGovern | |
| Simone Flynn P.E. | Nakhoon Kim | Fernand M. Tomaz | |

By John Callahan, CPD, V. P. Membership, Boston Chapter ASPE

2025 ASPE Boston Chapter Product Show & Educational Seminars

The ASPE Boston Chapter is pleased to announce an impressive lineup of seminar topics and guest speakers for the upcoming 2025 Boston Chapter Product Show. The seminar topics and guest speakers are listed below. The seminars will be held prior to the 2025 Product Show and will be presented in the Best Western Hotel Conference Rooms, adjacent to the Royal Trade Plaza in Marlborough MA.

We have curated a series of pertinent engineering and plumbing industry hot topics that many of you, our members, have requested. There will be a total of (9) 1-hour seminars and (2) 2-hour seminars to choose from. The seminar sessions will begin promptly at 11:00 am and the last session will end at 4:00 pm, just before the Product Show floor opens to attendees.

Box lunches will be provided for attendees of the 11:00 am sessions.

Attendees will automatically receive CEU's for each seminar completed.

The 1-hour sessions (0.1 CEU Credit):

Hot Water Return & Design	Presented by Christoph Lohr, PE
Rainwater Harvesting	Presented by Dan Keebler, CSM LEED
Fire Suppression - Bim Hydraulic Calcs	Presented by Brendan Kerrigan, BSCE, MSFPE
Roof Drainage Depth Flow	Presented by Scott Young, B-IBE
Waste Water Regulations (DEP & MA)	Presented by Gary Broberg, PE, BSCE
MA Plbg Code Discussion & Information Session	Presented by MA State Plumbing Board Member
Drain Line Carry & Code Impacts	Presented by Scott Young, B-IBE
Siphonic Roof Drains - ASPE 45	Presented by James F Ellis, B-BBS

The 2-hour Sessions (0.2 CEU Credit):

The Water Demand Calculator	Presented by Christoph Lohr, PE, LEED AP BD+C
Water Heater Systems Designs	Presented by Joe Scott, CPD, FASPE LEED AP

Please visit our chapter website for more detailed information on the topics and speaker bio's.
<https://aspebostonchapter.org/meetinginfo.php>

Product Show Seminar Topics & Speakers



Joe Scott, CPD, FASPE, LEED AP

Domestic Hot Water System Designs

2- hour Session

Joe will bring his many years of expertise in the field of plumbing systems engineering and discusses in this session domestic hot water systems. He will cover the fundamentals of domestic hot water design.

- Fundamental calculations and theory of hot water systems design.
- Sizing water heaters for various building types.
- Basics of legionella mitigation.
- Considerations of hot water recirculation systems.
- ASHRAE 514 Compliance.
- Specialty considerations for health care.



Christoph Lohr, PE, CPD, LEED AP BD+C

Water Demand Calculator - Alternative to Using the Hunter's Curve

2-hour session

The Hunter's Curves has been the basis of sizing domestic water systems for a few generations. The introduction of water saving fixtures started industry professionals questioning how oversized the Hunter Curves are. About 15 years ago a consensus group made up of scientists, engineers and industry professionals started a comprehensive review & research to address these questions. The results of this consensus group's research are modification to the Uniform Plumbing Code with the Water Demand Calculator.

Christoph will go thru an example on how to use the Water Demand Calculator with a focus on multi-family dwellings. Christoph will also discuss the latest updates of where we are with developing WDC 3.0 for commercial buildings and other future WDC items, current research for Commercial and other building types.



Dan Keebler, CSM, LEED




Rainwater Harvesting Systems

1- hour Session

Dan will go through the appropriate fundamentals of designing, specifying and implementation of rainwater harvesting systems. He starts with a discussion of cost-effective strategies and applications. Discussion on the responsibilities of various professionals. He will take a deep dive into the system components and sizing.

- Rainwater Collection & Filtration
- Cost Effective solutions
- Scope for designers
- System implementation
- Pre-filtration
- Storage options
- Treatment Skids including secondary filtration
- Controls
- Standards & Code
- Case Studies

Product Show Seminar Topics & Speakers

 <p style="text-align: center;">Scott Young</p>	<p style="text-align: center;"><u>Roof Drain Flow Testing & Impacts on Sizing</u></p> <p style="text-align: center;">1- hour session</p> <p style="text-align: center;"><u>Drainline Carry & Code Impacts</u></p> <p style="text-align: center;">1- hour session</p>	<p>Scott will go through the appropriate fundamentals of roof drain flow testing and how code changes affect the way roof drains are sized today. He will also cover how roof drains are flow tested and what components of a roof drain affect flow the most.</p> <p>Seminar highlights:</p> <ul style="list-style-type: none"> - UPC vs IPC Sizing - ASPE Storm Drainage Research Project - Testing Methods Pro's & Con's - Flow Test Data - Elements of a roof drain that affect flow. <p>Scott will cover the evolution of GPF's and High Efficiency Toilets and the impact of reduced water on drainline performance. He will also review highlights from the 2012 PERC Test in relation to low flow toilets and their potential to cause drain blockages.</p>
 <p style="text-align: center;">James F Ellis, BS</p>	<p style="text-align: center;"><u>Siphonic Roof Drains - ASPE 45</u></p> <p style="text-align: center;">1 - Hour Session</p>	<p>This Siphonic Roof Drain presentation is designed to provide participants with a foundational understanding of siphonic roof drainage systems. The course covers key differences between siphonic and traditional gravity roof drainage, highlighting common issues associated with gravity systems.</p> <p>Participants will learn about the numerous advantages of siphonic drainage, including significant reductions in pipe sizing, the elimination of most vertical piping and interior/exterior trenching, and a substantial increase in overall system efficiency—up to three to four times that of traditional systems.</p> <p>The course will also provide an overview of the ASPE 45 guidelines for siphonic drainage design. Additionally, we will explore considerations when connecting to stormwater drainage systems, pipe bracing requirements, and key aspects of system design.</p>
 <p style="text-align: center;">Gary Broberg, PE</p>	<p style="text-align: center;"><u>Water Treatment Regulations</u></p> <p style="text-align: center;">1- hour Session</p>	<p style="text-align: center;">Waste Water Regulations Review</p> <ul style="list-style-type: none"> • Clean Water Act • EPA Industrial Pretreatment Program CFR 400 • MassDEP Wastewater Regulations 314 CMR 12, 257 CMR 1 & 2 • MassDEP Regulations Sewer Connection Regulations 360 CMR 10 • MassDEP Regulation Ground Water Discharge Regulations 360 CMR 10 • Local City Ordinances (Boston, Cambridge, etc.) • Conflicts & prudent design practice for Plumbing Engineers.

INCOMPLETE APPLICATIONS WILL NOT BE PROCESSED.

Mr. Ms. Miss Mrs.

PLEASE COMPLETE APPLICATION IN ENGLISH

First Name _____ Middle Name _____ Last Name _____
 Birth Date: M ___ / D ___ / Y ____ Check all that apply: CPD CPDT GPD P.E. P. Eng Graduate Engineer LEED AP CET Other _____
 I wish to affiliate with the _____ Chapter. Certification (P.E.) State _____ Certificate No. _____ (Both State & Cert. No. Required)
 Preferred Mailing Address RESIDENCE BUSINESS
 RESIDENCE: Street Address _____ City _____ State _____ ZIP _____ Phone _____
 Primary Email (REQUIRED) _____ Secondary Email _____ Cell Phone _____
 BUSINESS: Organization Name _____ Your Title _____ Phone _____
 Street Address _____ City _____ State _____ ZIP _____
 Other organizations you are a member of: ASHRAE ASSE NFPA NSPE ASME PHOC ICC IAPMO SFPE Other _____

EDUCATION

	Name of Institution	Course or Major	From	To	Graduation Date	Degree/Diploma
College/University						
Technical School						
Others						

PROFESSIONAL EXPERIENCE

(This section **must** be completed as it affects membership grade classification. List chronologically, beginning with the present. Work description must be clear and concise: e.g., plumbing, piping, fire protection, HVAC, etc.)

Date (Mo/Yr) From	To	Firm Name and Address	Class* (see below)	Title	Description of Work	Degree of Responsibility

*Classification of Firm A - Arch./Engr. or Cons. Engr. B - Govt. Agency C - Mfr. or Mfr's. Rep. D - Educ. Inst. E - Contractor F - Other (Explain) **REMIT MEMBERSHIP DUES WITH APPLICATION**

PLUMBING ENGINEERING DESIGN HANDBOOK

New members (except students) receive one of four volumes annually of this definitive collection of general plumbing practices. As an ASPE member you will be sent the selection you have indicated. If you would like both the CD-ROM and softcover editions, please add \$50 to your total. All ASPE Members will have access to the downloaded version.

CD-ROM SOFTCOVER DOWNLOAD BOOK & CD (Additional \$50)

RENEWAL REMINDER

I WOULD LIKE TO RECEIVE MEMBERSHIP RENEWAL REMINDERS AND SOCIETY RELATED IMPORTANT ANNOUNCEMENTS VIA TEXT MESSAGES.

CERTIFICATION BY APPLICANT

The undersigned certifies that all statements made herein are correct and, if elected to the Society, agrees to adhere to the Society's Bylaws and accept the Classification conferred by the Society. Upon becoming a member, the applicant will endeavor to advance the objectives of the Society and the plumbing engineering profession.

Signature of Applicant _____

Sponsor _____ (Please Print) _____ Date _____

How did you hear about ASPE? Past Member Colleague/Employer ASPE App Website Other _____

American Society of Plumbing Engineers member dues are nonrefundable and not deductible as a charitable expense, but may be deductible as a business expense.

* Contributions to ASPE Education (create education programs for membership) and Alfred Steele Scholarship (to award college scholarships) and PE Curriculum/Licensing (create future curriculum and licensing opportunities for membership) Funds are Strictly Voluntary and are not deductible as a charitable contribution but may be deductible as an ordinary and necessary business expense.

** Contributions to the ASPE Research Foundation are Strictly Voluntary and are tax deductible as a charitable contribution.

Member Type	Amount	Amount Due
<input type="checkbox"/> Full	\$200	\$ _____
<input type="checkbox"/> Associate	\$200	\$ _____
<input type="checkbox"/> Affiliate	\$200	\$ _____
<input type="checkbox"/> Student	\$40	\$ _____
<input type="checkbox"/> PEDH CD & Book	\$50	\$ _____
<input type="checkbox"/> ASPE Alfred Steele Scholarship Fund**	\$25	\$ _____
<input type="checkbox"/> ASPE Education Program Fund**	\$25	\$ _____
<input type="checkbox"/> PE Curriculum/Licensing Fund**	\$25	\$ _____
<input type="checkbox"/> ASPE Research Foundation**	\$25	\$ _____

TOTAL AMOUNT DUE \$ _____

Payment Information:

Enclosed is my check payable to ASPE.

Please charge my:

Visa, MasterCard Discover American Express

Card # _____

Exp Date: _____ Security Code: _____

Zip Code: _____

Signature: _____

Date: _____

Multi-Year Membership Renewal

Now you can save on your ASPE membership dues if you join or renew for more than one year. Current and new members will get a 5% discount for a two-year renewal and a 10% discount for a three-year renewal. Thus, members opting to join or renew for two years would pay \$361 for both years, representing a \$19 discount, and members opting to join or renew for three years would pay \$513 for three years, representing a \$66 discount. You can renew online at aspe.org/MembershipRenewal.

Early Renewal Discount for First-Year Members

After you join ASPE for the first time, you can ensure continued membership benefits at a discount by renewing early. Any first-year member who renews by the end of the eighth month of their membership will receive a reduced dues amount of \$170 for the second year, therefore saving \$20 by renewing early. Eligibility guidelines for this discount follow:

- Only those who joined after July 1, 2018 are eligible.
- Only 125 members per quarter can take advantage of this offer on a first come first serve basis.
- Renewal must be done online at aspe.org/MembershipRenewal.

Multiple Chapter Affiliation

Did you know that you can be a member of more than one ASPE Chapter? You can! Here's how it works:

- The first Chapter affiliation is the standard dues of \$190.
- Additional Chapter affiliations are \$80 per Chapter. There is no limit to the number of Chapters with which a member can affiliate.
- The member must designate a Home Chapter.
- Regardless of the Home Chapter affiliation, the member can serve on the Board of Directors for any Chapter with which the member is affiliated.
- However, the member can only serve as a Convention Delegate for his/her Home Chapter.
- Members affiliating with multiple Chapters will receive only one Plumbing Engineering Design Handbook (PEDH) per year when renewing.

Contact the **Membership Department at 847-296-0002** for more information or to affiliate with multiple Chapters.

**ASPE BOSTON CHAPTER
2025-2026
ASPE NEWS ADVERTISEMENT REQUEST FORM**

Company: _____

Address: _____

Contact: _____

Telephone: _____

Fax: _____

ASPE MEMBER NAME: _____

MEMBER NUMBER: _____ **REQUIRED**

AD TYPE	NO.PER YEAR	COST	PHYSICAL SIZE (APPROX. MAX)	CIRCLE ONE
Bus. Card	10	\$650/yr	3½"x 2"	New or Repeat

BUSINESS CARD SIZED ADS ARE NOW THE ONLY SIZE BEING OFFERED

Non Members of ASPE add \$150.00 to price.

Payment must accompany your ad!

MAKE CHECKS PAYABLE TO ASPE BOSTON CHAPTER

Send to: ASPE Boston Chapter - NEWSLETTER
PO Box 111
East Walpole, MA 02032

PAYMENTS CAN BE MADE ONLINE AT

<http://www.aspebostonchapter.org/onlinepayment.html>

If you have any questions please contact:

Dawn Pokorny (508) 520-0133 or dawnp@jhpokorny.net
All ad renewals, artwork, and payments are **due by 9/15/25.**

As in previous years, free ads for employment opportunities will be placed
on a space available basis, for Full Members of Engineering-related firms.